

1. Update page access

1.1 Connect to the Administration Page

Select **System**



For more information on how to connect to the Administration Page, see the d2 Network User Manual at LaCie



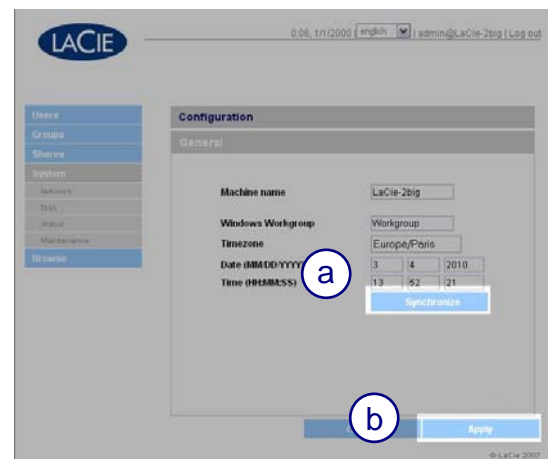
1.2 Synchronize date & time

Click **Synchronize** (a)

Select **Apply** for the change to take effect (b)



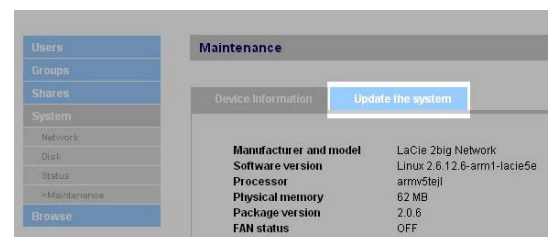
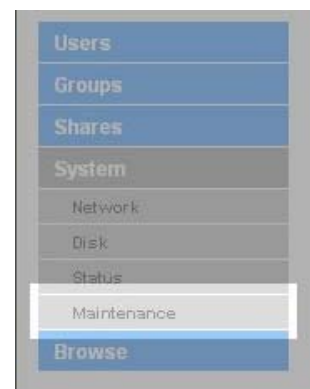
Some update cannot be applied if date is incorrect



1.3 Access to the Update the system page

Select **Maintenance**

Select **Update the system**



2. Update the device from 2.2.X to 2.2.5

2.1 Update to the backend patch

Go to the **Update the system** page

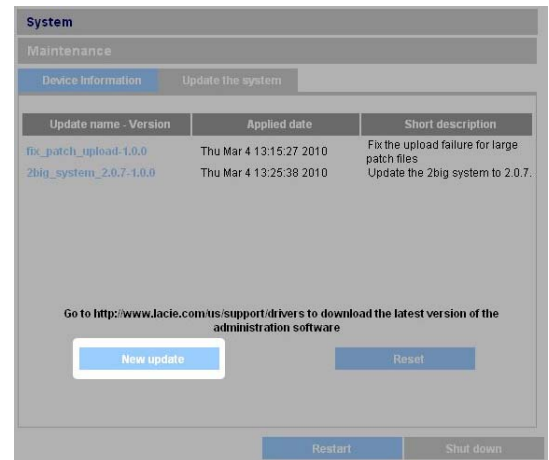
Click **New update**



See [1.3 Access to the Update the system page](#) for further information on accessing the page



- Before starting the update:
- Stop all data transfers from the device
 - Disconnect all shares mounted on computers
 - Turn off all other network devices

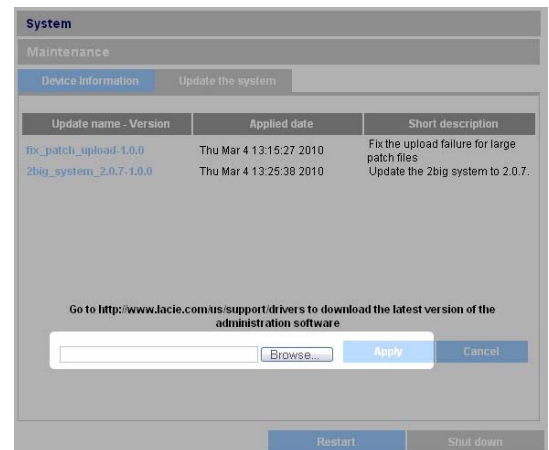


Browse your computer for the patch file:
d2 Network Backend Update.signed

Click **Apply**



Download the patch [here](#)
Unzip the patch before running the update



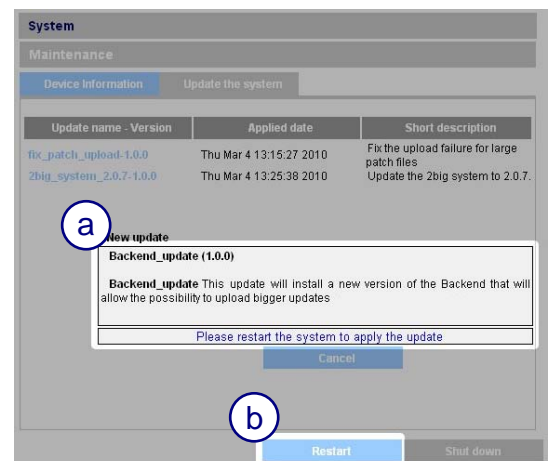
Please wait for the message instructing you to restart the device. (a)

Click **Restart** (b)

The device will restart



You may have to return to **Update the system** page to see the message instructing you to restart the device



2.2 Update to patch 2.2.5

Go to the **Update the system** page

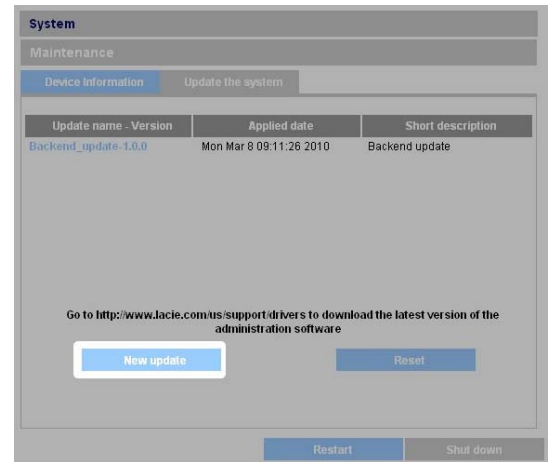
Click **New update**



See [1.3 Access to the Update the system page](#) for further information on accessing the page



The 2.2.5 update patch cannot be applied before patch Backend

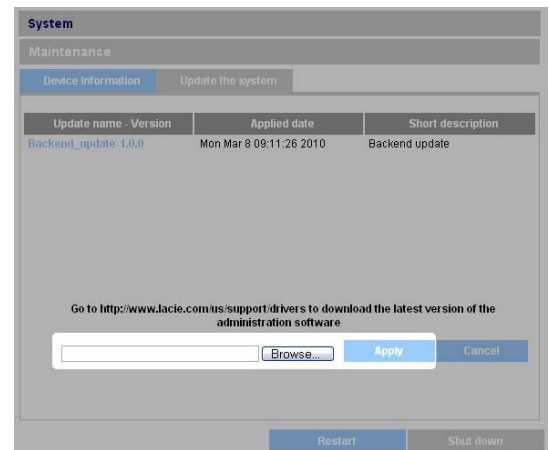


Browse your computer for the patch file:
d2 Network Update 2.2.5.signed

Click **Apply**



Download the patch [here](#)
Unzip the patch before running the update



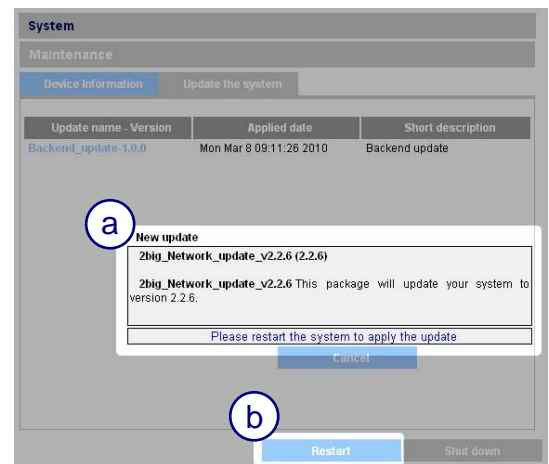
Please wait for the message instructing you to restart the device. (a)

Click **Restart** (b)

The device will restart



You may have to return to **Update the system** page to see the message instructing you to restart the device

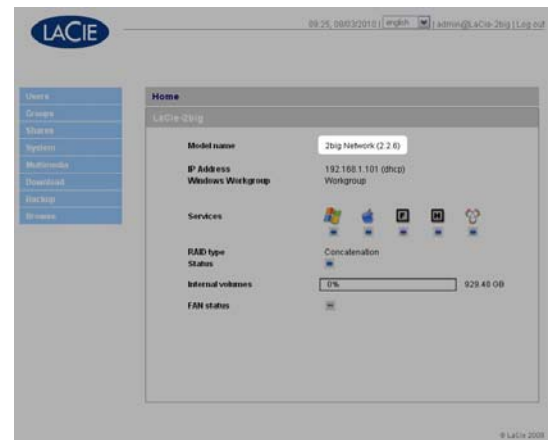


2.3 Confirm the updates

Go to the **Home** section of the Administration Page to confirm the current version of firmware



For more information on how to connect to the Administration Page, see the d2 Network User Manual at [LaCie](#)



Go to the **Update the system** page

Confirm that both updates are listed



See **1.3 Access to the Update the system** page for further information on accessing the page

